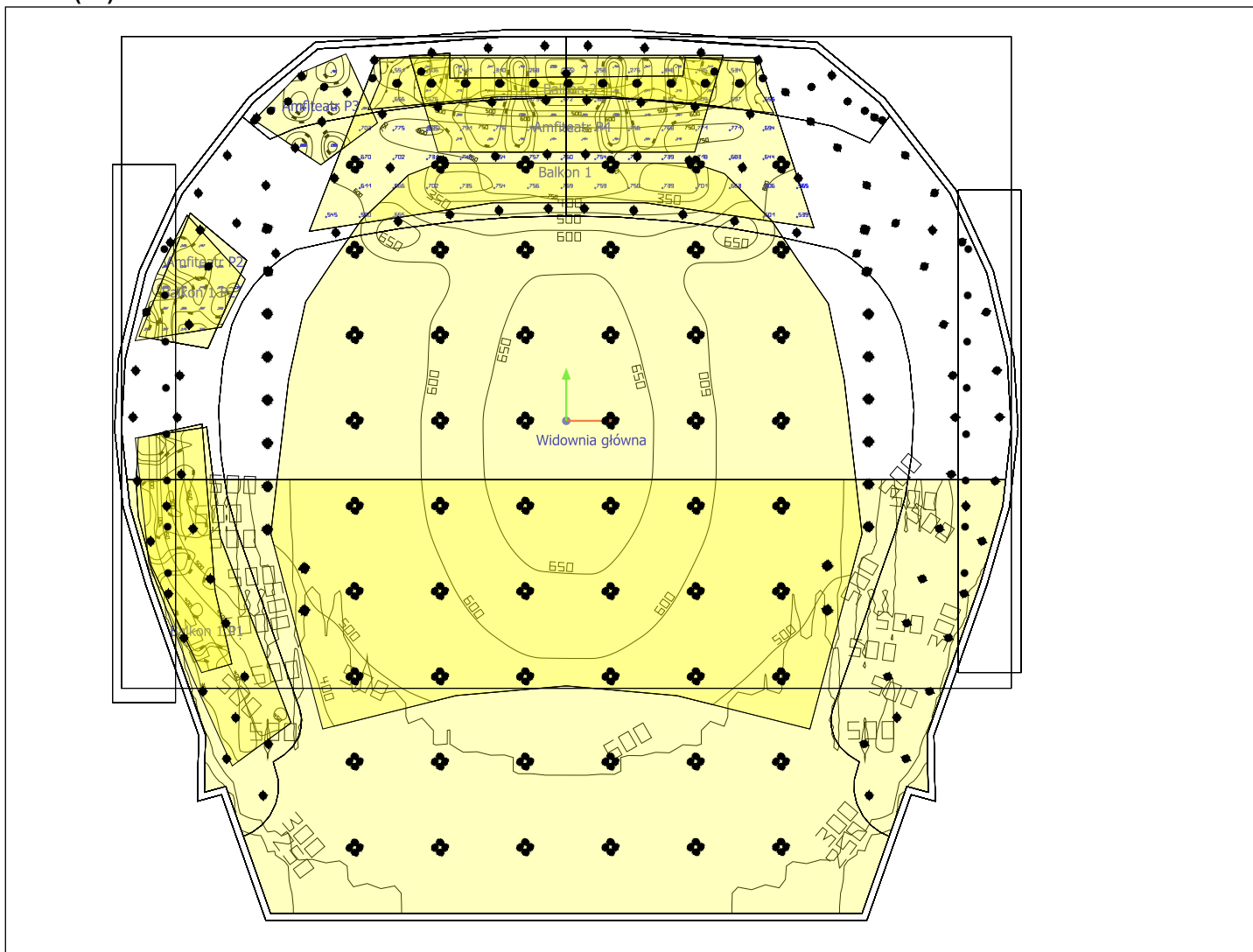


Opera Podlaska w Białymstoku

Projekt modernizacji oświetlenia z wykorzystaniem opraw do źródeł LED

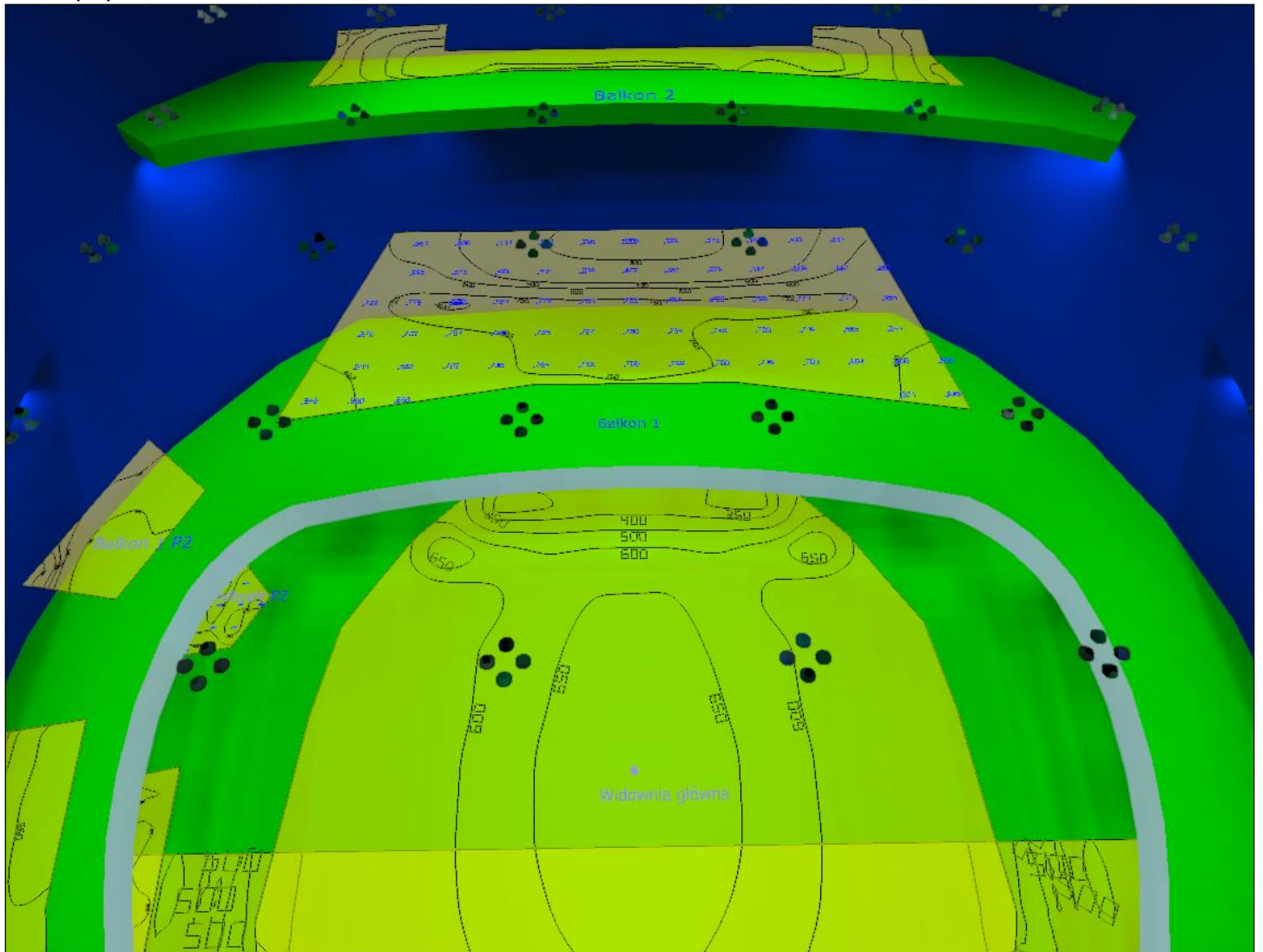
Room 1

Site 1 (31)

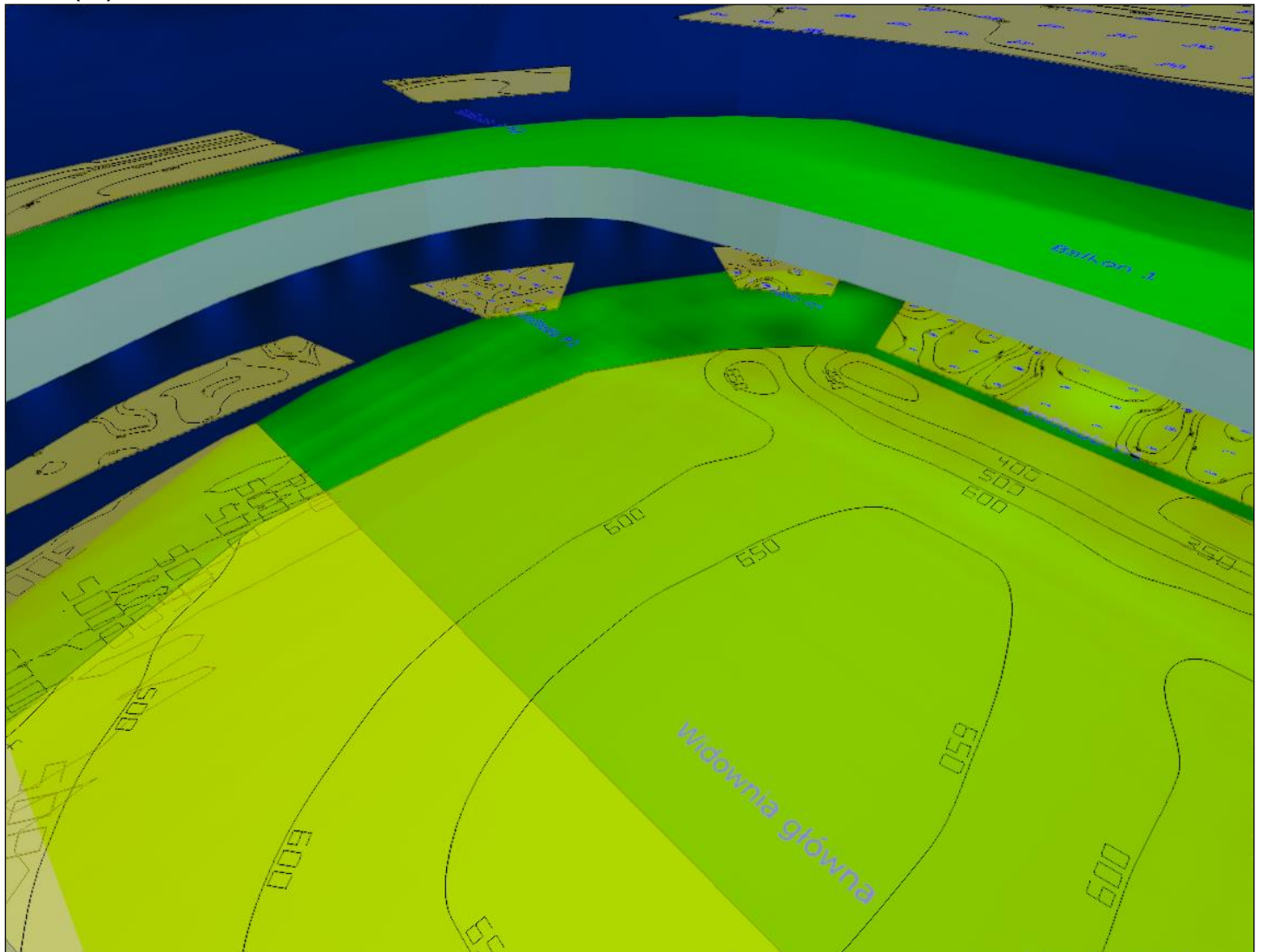


Scale: 1 : 194

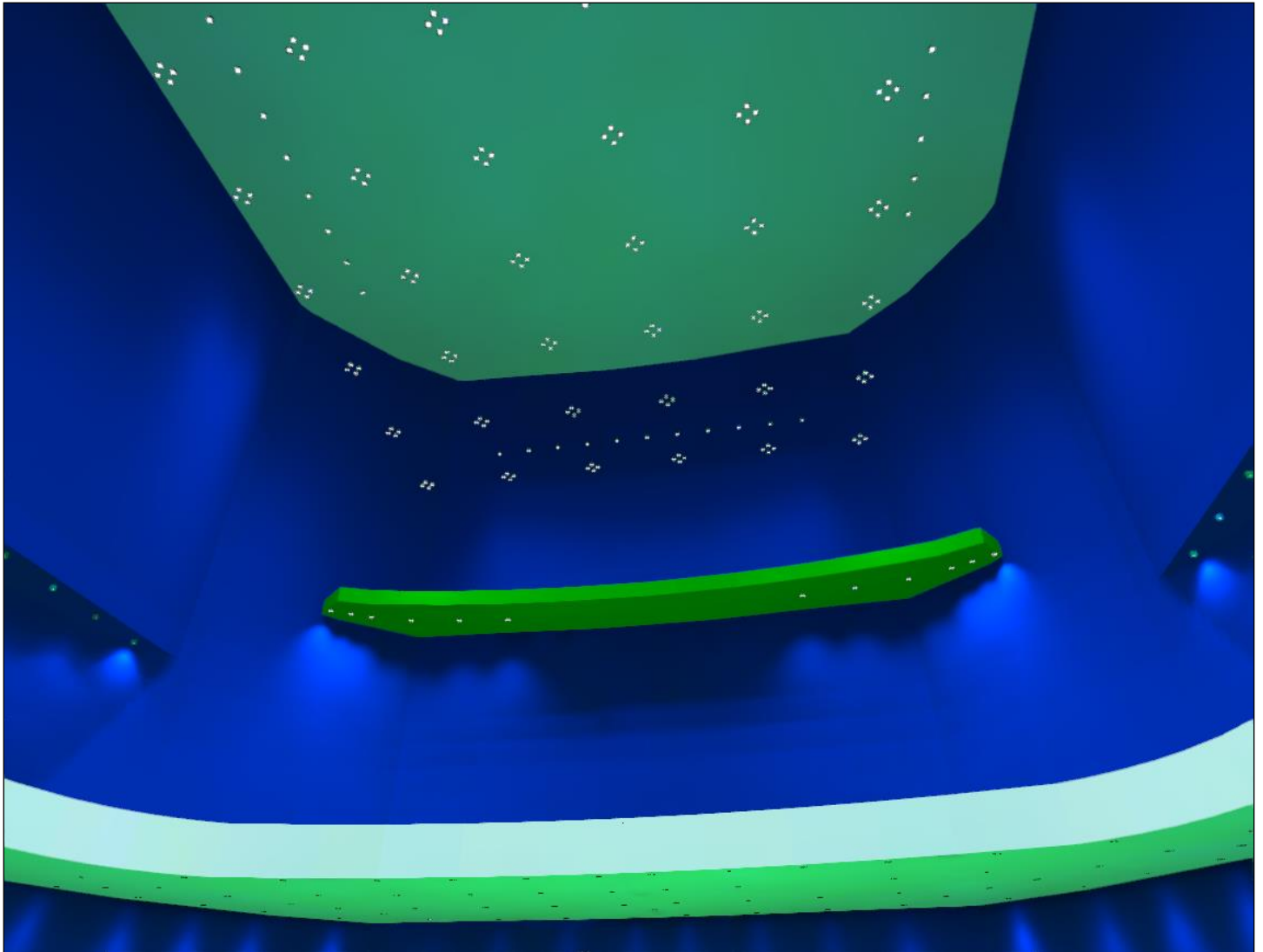
Site 1 (32)



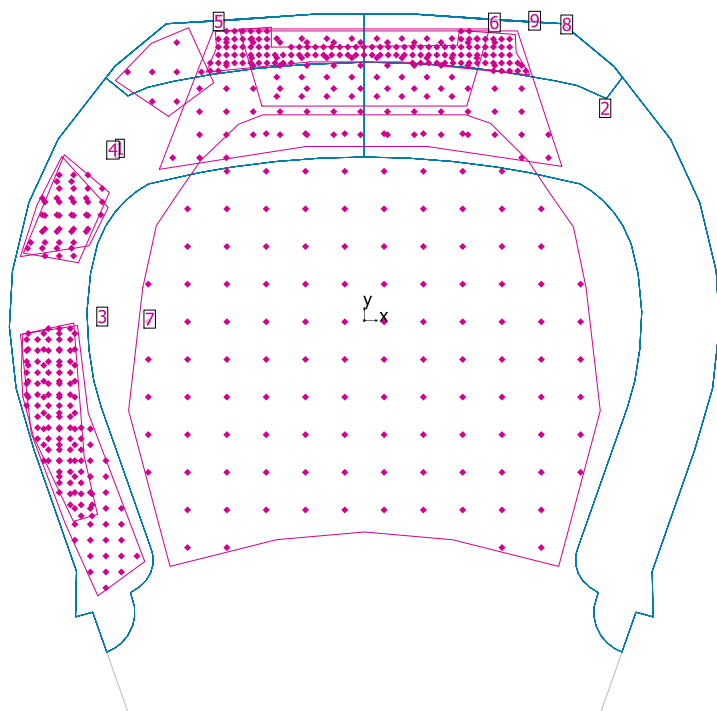
Site 1 (33)



Site 1 (34)



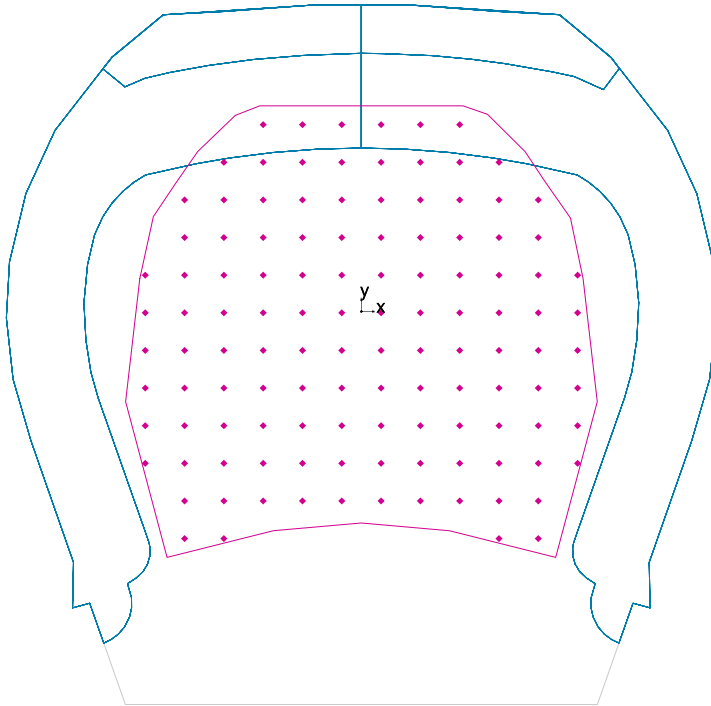
Room 1



Clearance height: 23.500 m, Reflection factors: Ceiling 36.2%, Walls 7.6%, Floor 20.0%, Maintenance factor: 0.90

General

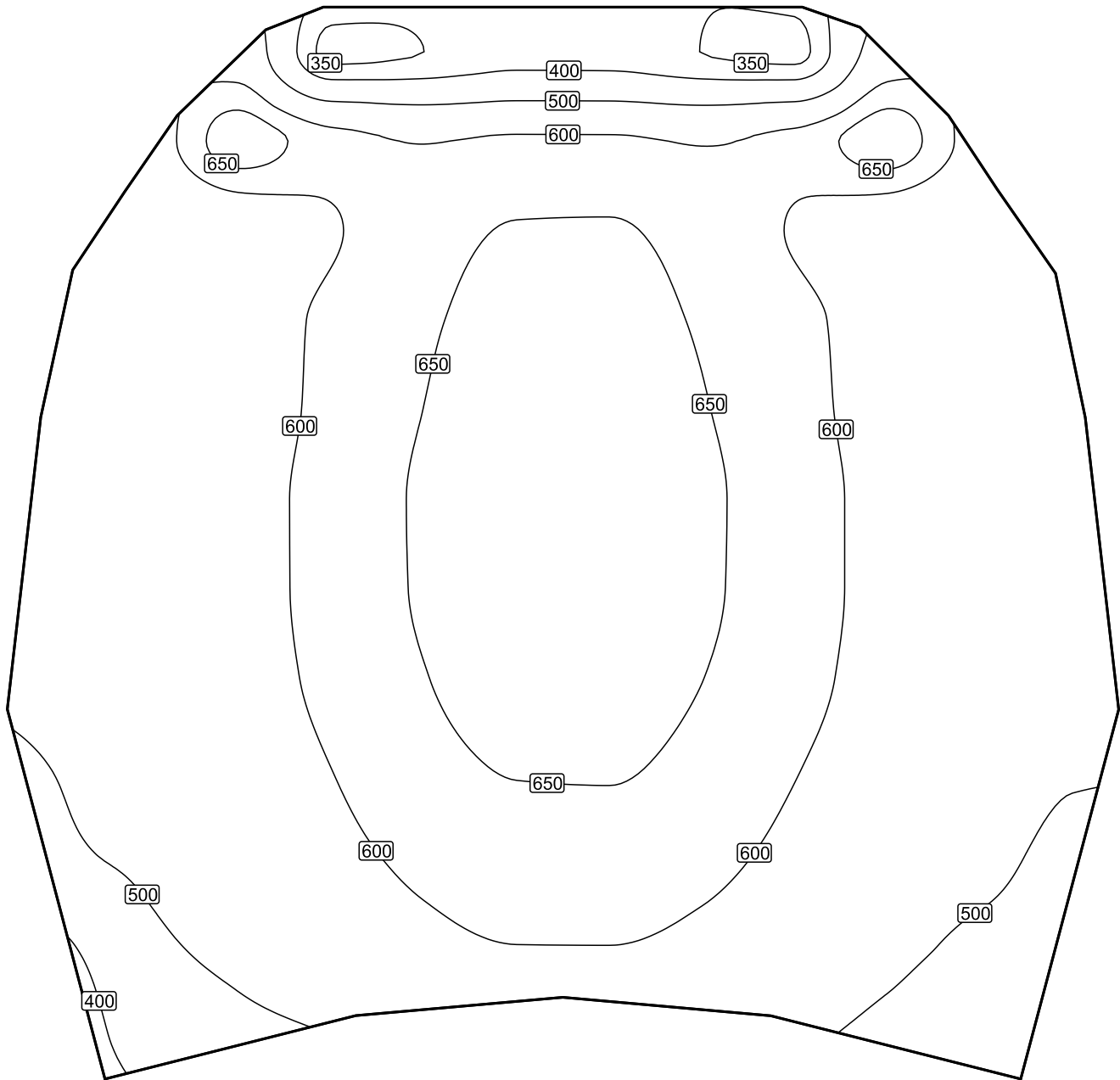
Surface	Result	Average (Target)	Min	Max	Min/average	Min/max
2 Widownia główna	Perpendicular illuminance [lx] Height: 2.050 m	576	334	680	0.58	0.49
3 Widownia główna P1	Perpendicular illuminance [lx] Height: 2.650 m	399	161	608	0.40	0.26
4 Widownia główna P2	Perpendicular illuminance [lx] Height: 2.850 m	388	175	578	0.45	0.30
5 Widownia główna P3	Perpendicular illuminance [lx] Height: 3.050 m	359	184	659	0.51	0.28
6 Widownia główna P4	Perpendicular illuminance [lx] Height: 3.000 m	367	159	795	0.43	0.20
7 Balkon 1 P1	Perpendicular illuminance [lx] Height: 6.800 m	438	266	586	0.61	0.45
1 Balkon 1 P2	Perpendicular illuminance [lx] Height: 7.200 m	528	292	577	0.55	0.51
8 Balkon 1	Perpendicular illuminance [lx] Height: 8.800 m	617	255	805	0.41	0.32
9 Balkon 2	Perpendicular illuminance [lx] Height: 13.954 m	679	431	784	0.63	0.55

Widownia główna / Perpendicular illuminance**Widownia główna: Perpendicular illuminance (Grid)****Light scene: Light scene 1**

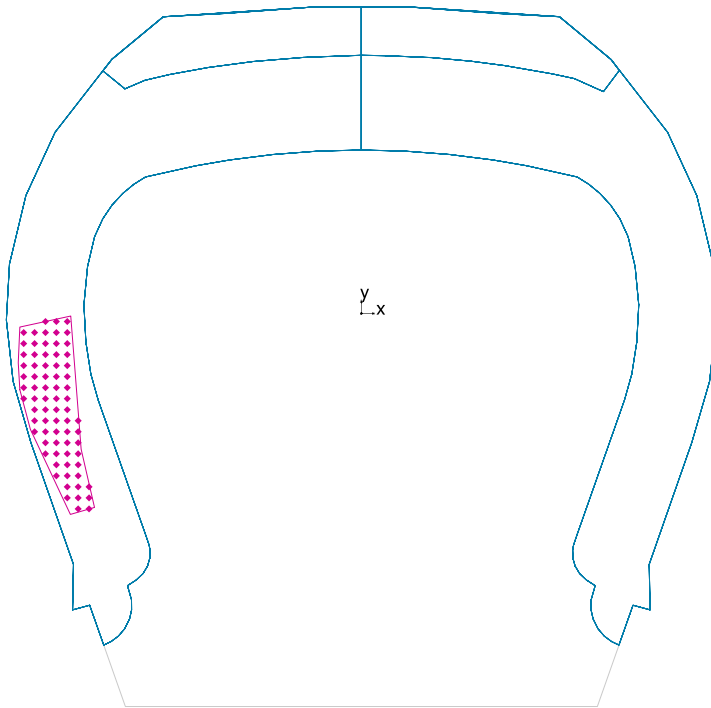
Average: 576 lx, Min: 334 lx, Max: 680 lx, Min/average: 0.58, Min/max: 0.49

Height: 2.050 m

Isolines [lx]



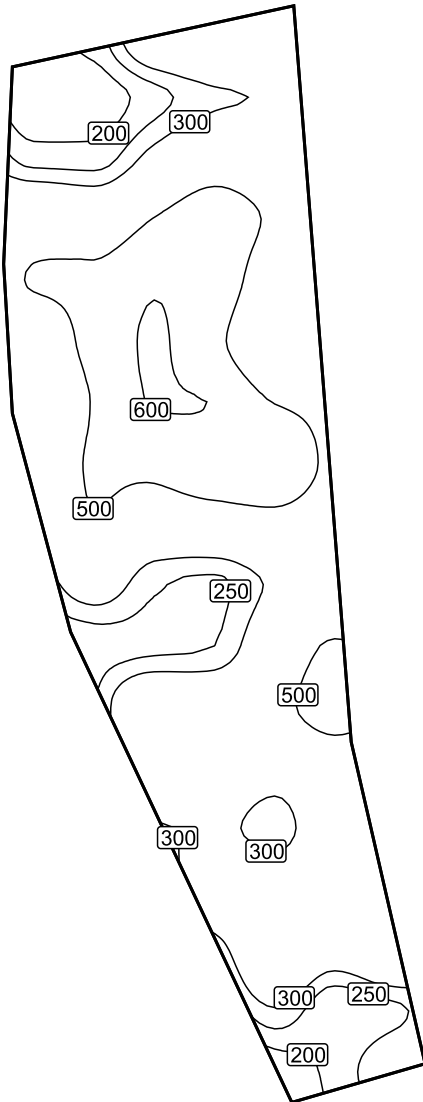
Scale: 1 : 100

Widownia główna P1 / Perpendicular illuminance**Widownia główna P1: Perpendicular illuminance (Grid)****Light scene: Light scene 1**

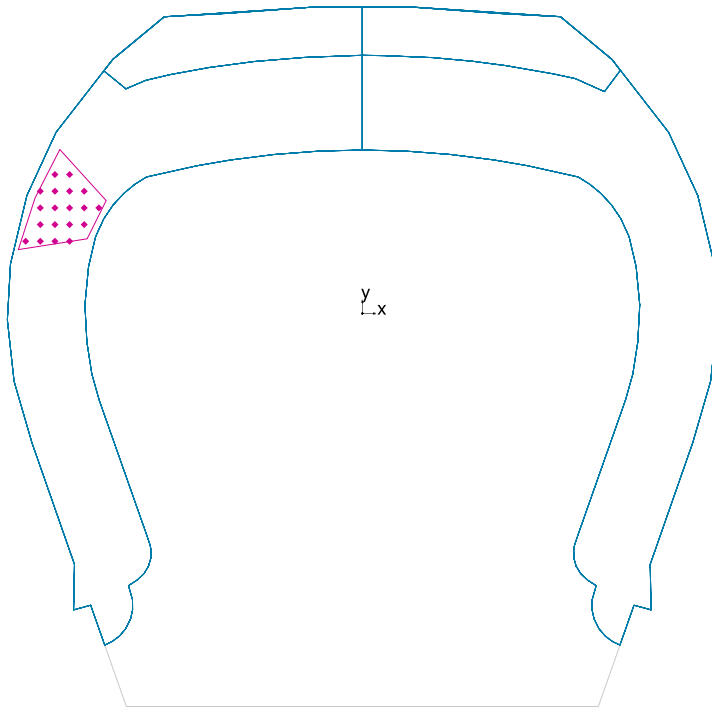
Average: 399 lx, Min: 161 lx, Max: 608 lx, Min/average: 0.40, Min/max: 0.26

Height: 2.650 m

Isolines [lx]



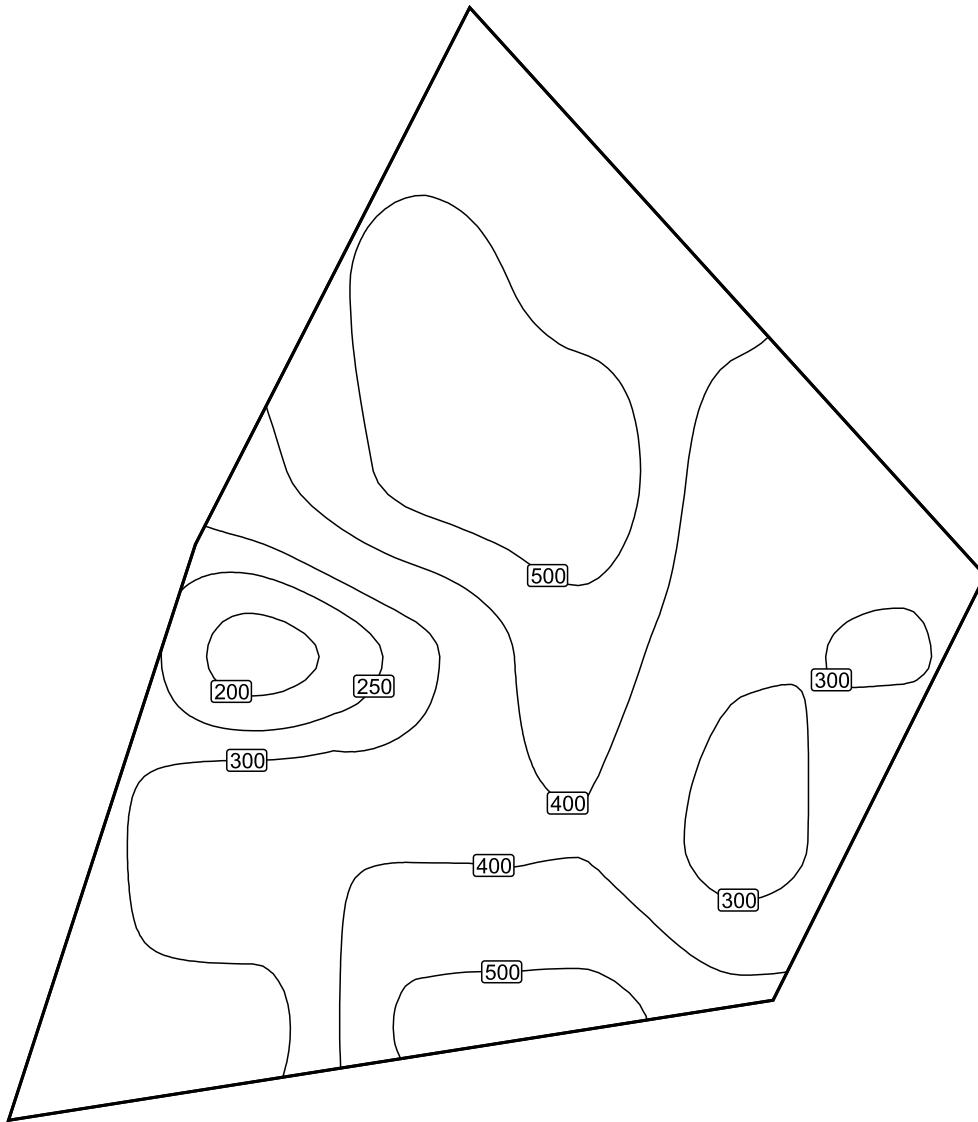
Scale: 1 : 50

Widownia główna P2 / Perpendicular illuminance**Widownia główna P2: Perpendicular illuminance (Grid)****Light scene: Light scene 1**

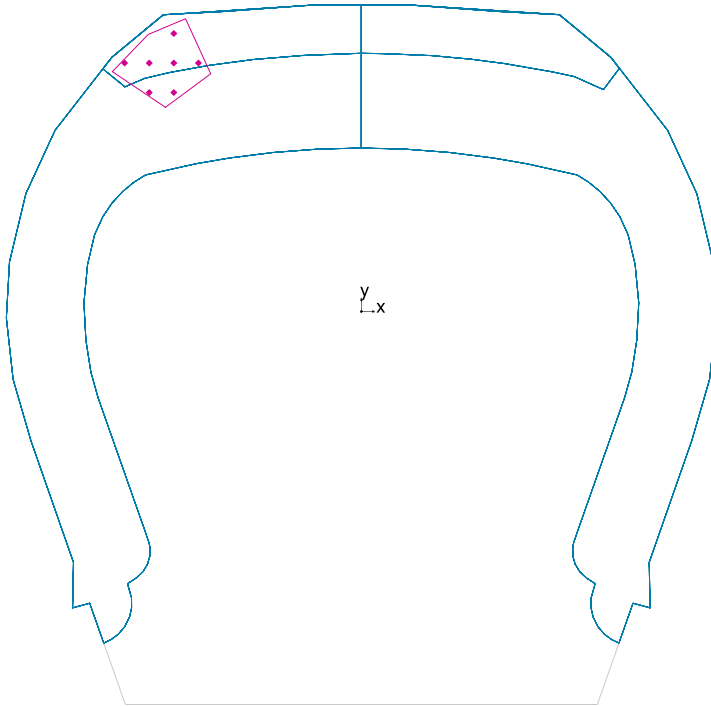
Average: 388 lx, Min: 175 lx, Max: 578 lx, Min/average: 0.45, Min/max: 0.30

Height: 2.850 m

Isolines [lx]



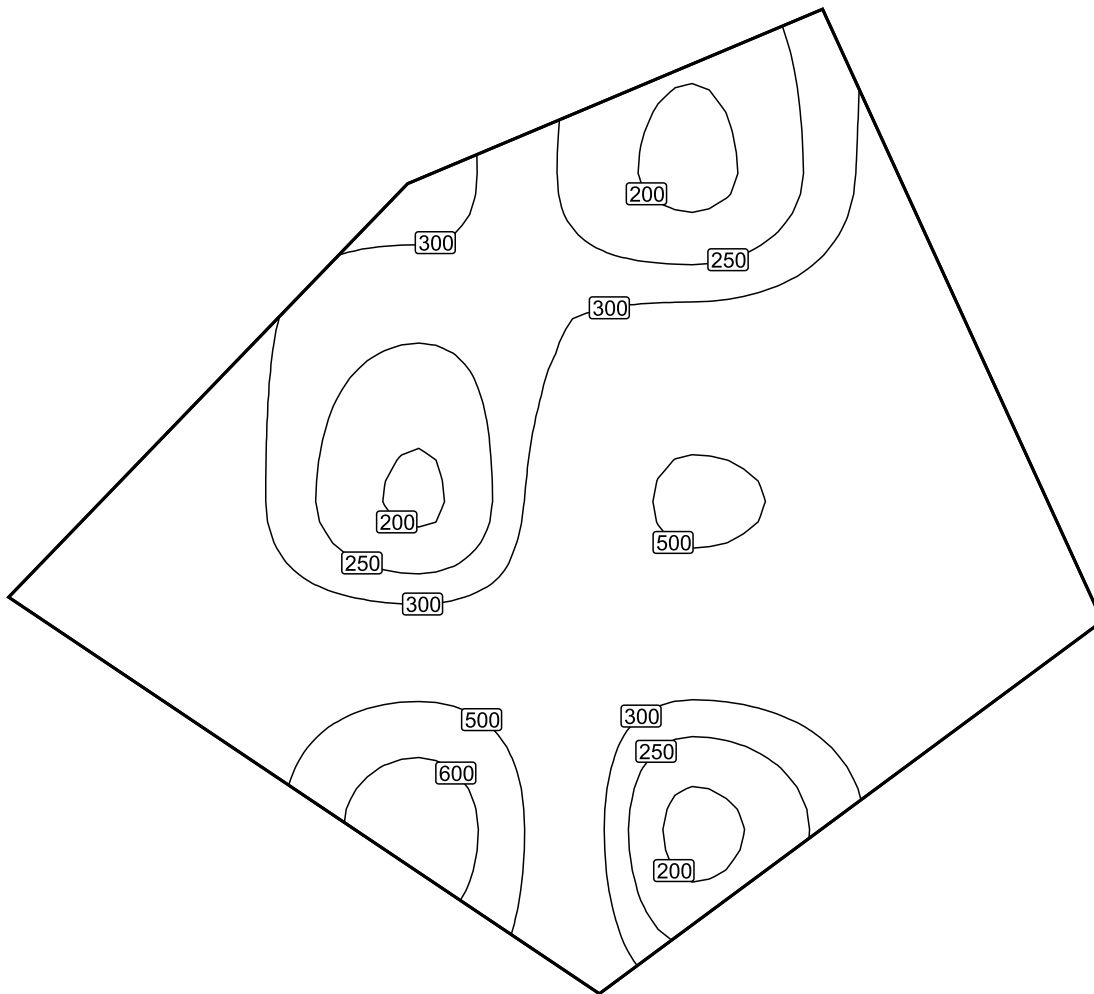
Scale: 1 : 25

Widownia główna P3 / Perpendicular illuminance**Widownia główna P3: Perpendicular illuminance (Grid)****Light scene: Light scene 1**

Average: 359 lx, Min: 184 lx, Max: 659 lx, Min/average: 0.51, Min/max: 0.28

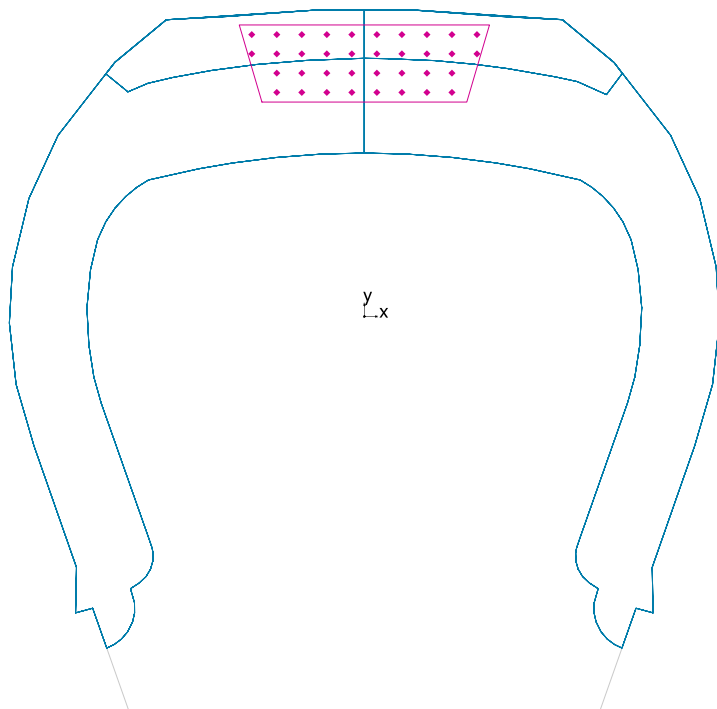
Height: 3.050 m

Isolines [lx]



Scale: 1 : 25

Widownia główna P4 / Perpendicular illuminance



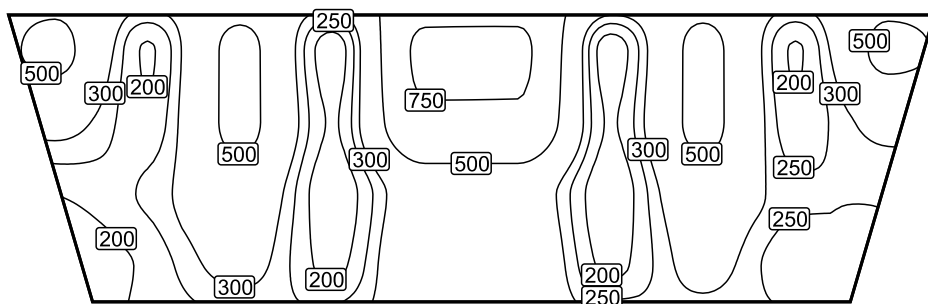
Widownia główna P4: Perpendicular illuminance (Grid)

Light scene: Light scene 1

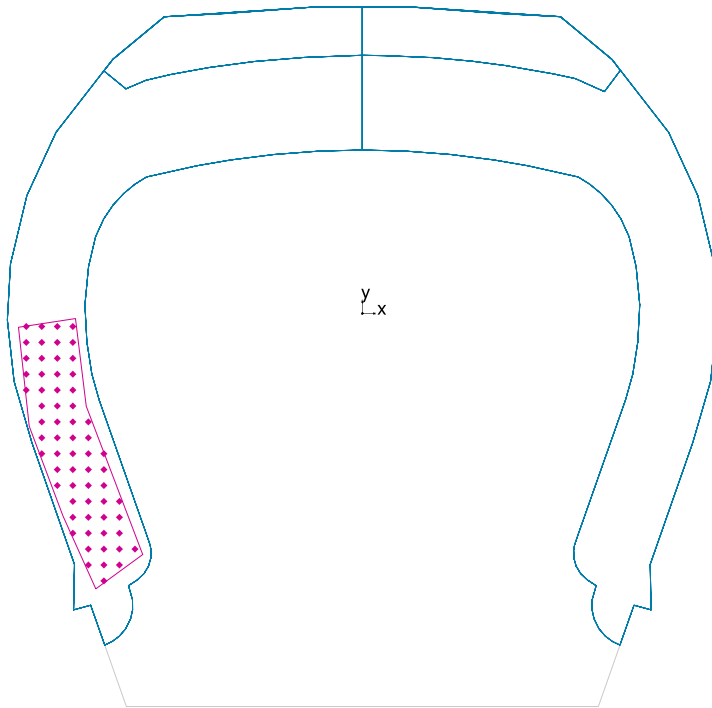
Average: 367 lx, Min: 159 lx, Max: 795 lx, Min/average: 0.43, Min/max: 0.20

Height: 3.000 m

Isolines [lx]



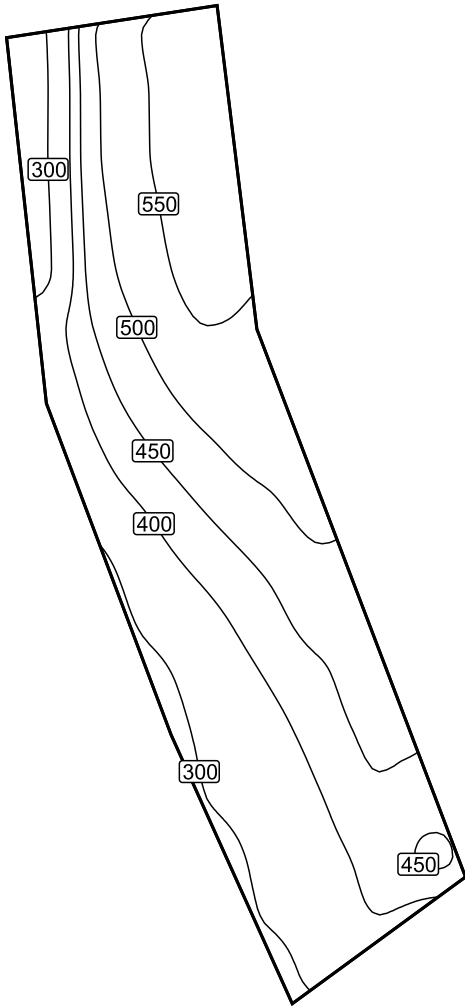
Scale: 1 : 75

Balkon 1 P1 / Perpendicular illuminance**Balkon 1 P1: Perpendicular illuminance (Grid)****Light scene: Light scene 1**

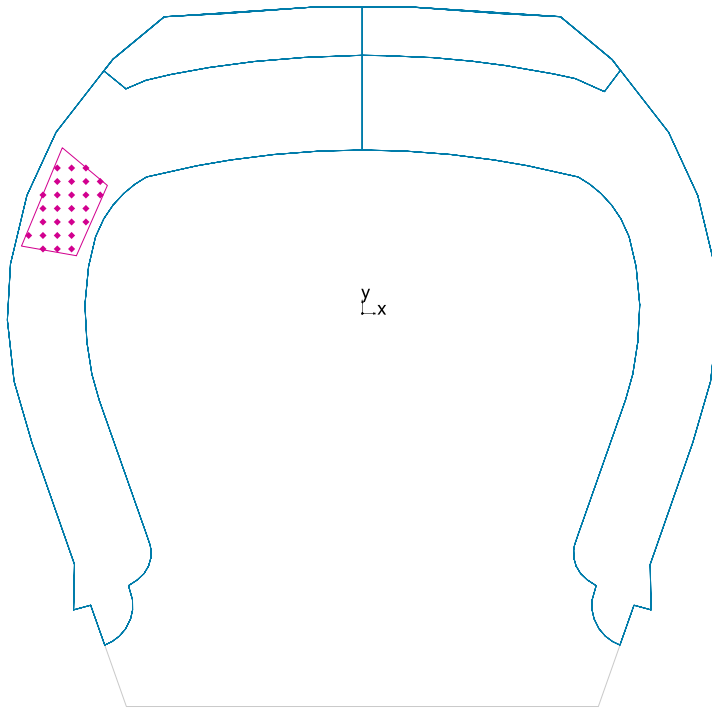
Average: 438 lx, Min: 266 lx, Max: 586 lx, Min/average: 0.61, Min/max: 0.45

Height: 6.800 m

Isolines [lx]



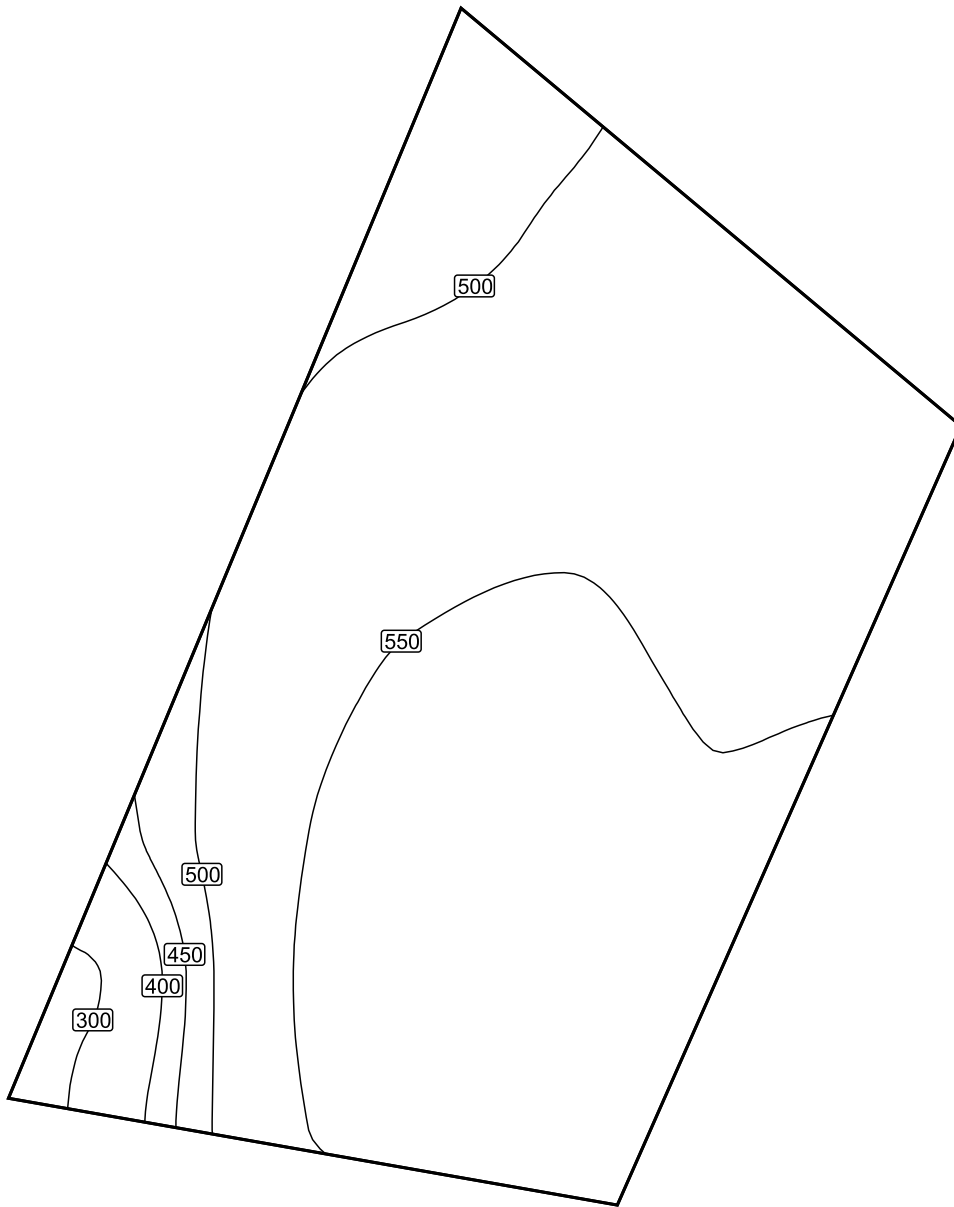
Scale: 1 : 75

Balkon 1 P2 / Perpendicular illuminance**Balkon 1 P2: Perpendicular illuminance (Grid)****Light scene: Light scene 1**

Average: 528 lx, Min: 292 lx, Max: 577 lx, Min/average: 0.55, Min/max: 0.51

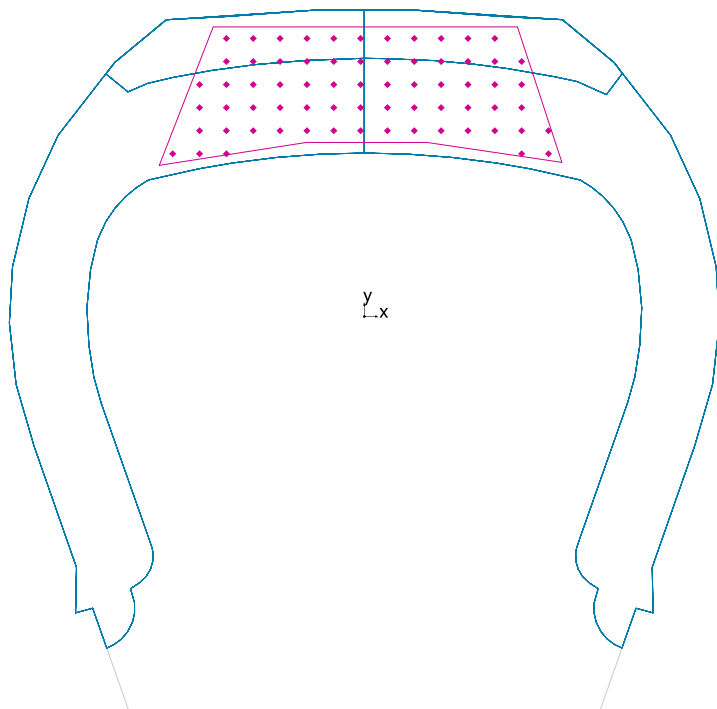
Height: 7.200 m

Isolines [lx]



Scale: 1 : 25

Balkon 1 / Perpendicular illuminance



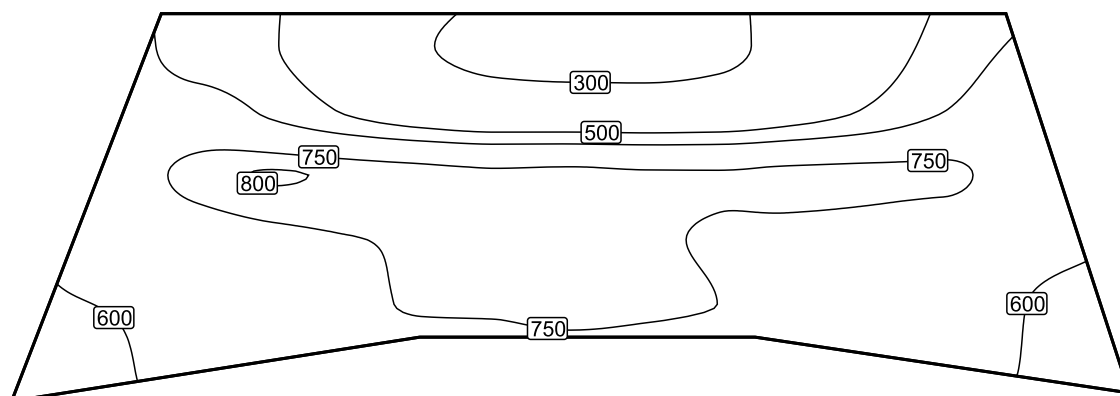
Balkon 1: Perpendicular illuminance (Grid)

Light scene: Light scene 1

Average: 617 lx, Min: 255 lx, Max: 805 lx, Min/average: 0.41, Min/max: 0.32

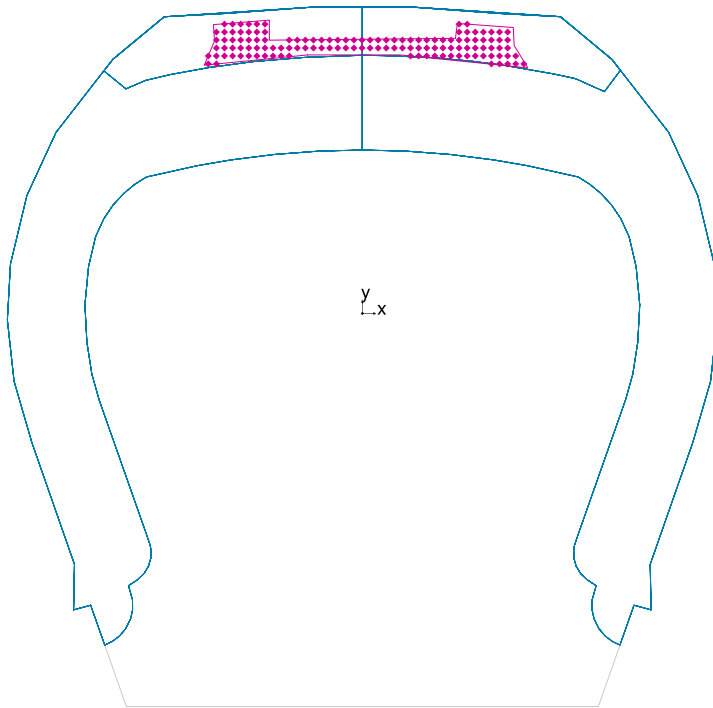
Height: 8.800 m

Isolines [lx]



Scale: 1 : 100

Balkon 2 / Perpendicular illuminance



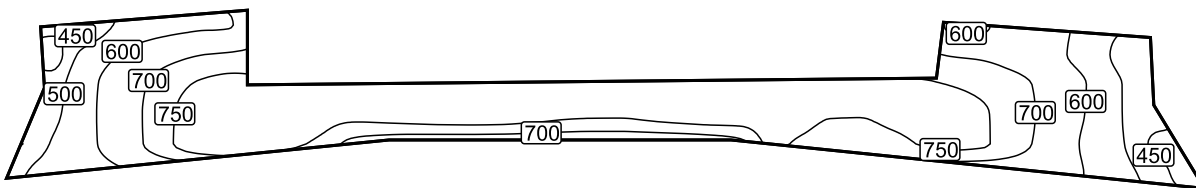
Balkon 2: Perpendicular illuminance (Grid)

Light scene: Light scene 1

Average: 679 lx, Min: 431 lx, Max: 784 lx, Min/average: 0.63, Min/max: 0.55

Height: 13.954 m

Isolines [lx]



Scale: 1 : 75